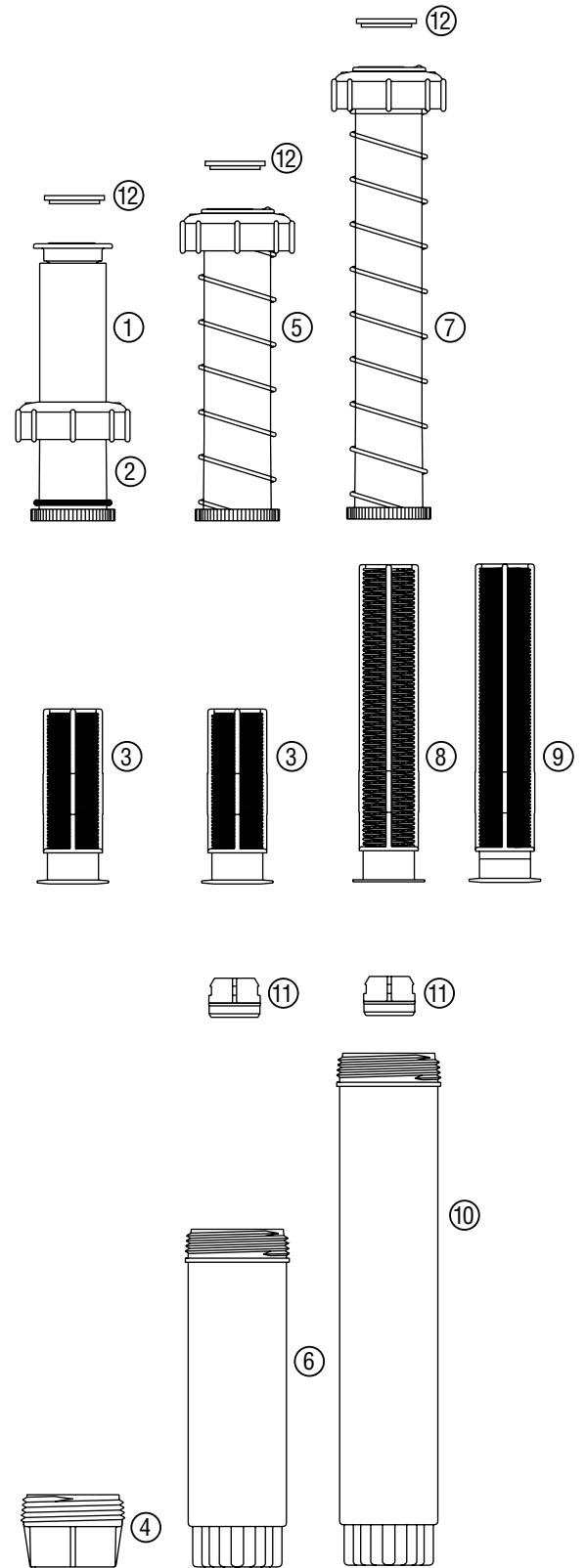


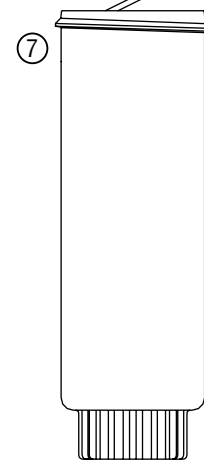
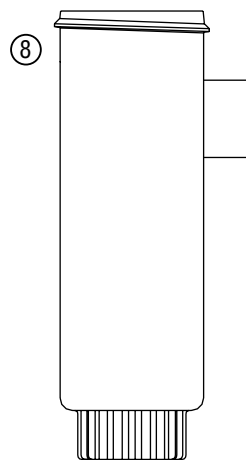
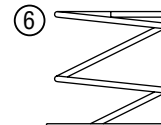
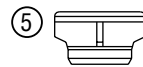
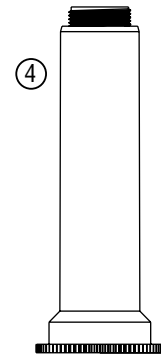
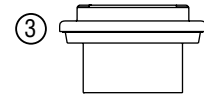
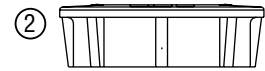
# PS: Spray Sprinkler

Item	Description	Catalog No.	
①	Shrub Riser Assembly	10-ft. ADJ	241701
		12-ft. ADJ	241801
		15-ft. ADJ	241901
		17-ft. ADJ	242001
		5 x 30-ft. 5SS	240801
②	O-Ring Seal	252100	
③	2-in. Filter Screen ( <i>Fine</i> )	182700	
④	Shrub Base	240300	
⑤	2-in. Riser Assembly	10-ft. ADJ	183401
		12-ft. ADJ	183301
		15-ft. ADJ	181601
		17-ft. ADJ	193701
		5 x 30-ft. 5SS	210501
⑥	2-in. Pop-up Body	179900	
⑦	4-in. Riser Assembly	10-ft. ADJ	183901
		12-ft. ADJ	183801
		15-ft. ADJ	181701
		17-ft. ADJ	193601
		5 x 30-ft. 5SS	210601
⑧	4-in. Filter Screen ( <i>Coarse/Black</i> ) <i>Standard on 17-ft. ADJ Only</i>	184400	
⑨	4-in. Filter Screen ( <i>Fine/White</i> ) <i>Standard on 10, 12, 15-ft., ADJ &amp; 360s Only (Not 17A)</i>	182600	
⑩	4-in. Pop-up Body	192000	
<b>Options</b>			
⑪	Check Valve Assembly ( <i>Bag of 25</i> )	461843	
⑫	ID Ring	10-ft. – Red	370700
		12-ft. – Green	370705
		15-ft. – Black	370710
		17-ft. – White	370715
	ID Ring ( <i>Bag of 100</i> )	Purple Reclaimed	461844



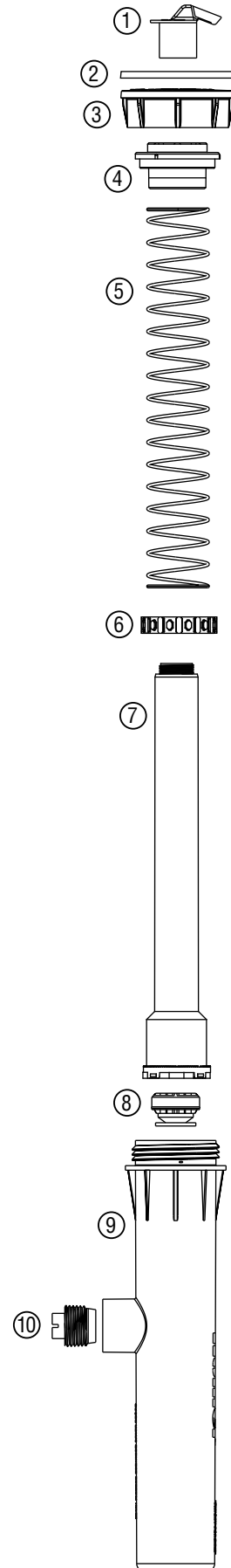
## SRS-02, 03, 04, 06 & 12: Spray Sprinklers

Item	Description	Catalog No.	
①	Reclaimed Water Identifier	349800	
②	Body Cap	334600	
③	Riser Seal	334700	
④	Riser	2"	343700
		3"	343900
		4"	334900
		6"	341300
		12"	341400
⑤	Check Valve ( <i>Bag of 25</i> )	462810	
⑥	Retraction Spring	2"	344100
		3"	344200
		4"	335100
		6"	335700
		12"	335800
⑦	Body ( <i>2", 3" &amp; 4" Models</i> )	2"	343800
		3"	344000
		4"	335000
⑧	Body w/ Side Inlet ( <i>6" &amp; 12" Models</i> )	6"	335300
		12"	335500



# PROS-02, 03, 04, 06, 12: Spray Sprinklers

Item	Description	Catalog No.	
①	Flush Cap (Gray)	423900	
②	Snap-On Rubber Cover	Black	469805
		Purple	469800
③	Body Cap	Standard (Black)	458500
		With Check Valve ID (Black)	458505
		Reclaimed Body Cap (Purple)	458520
		Reclaimed w/ Check Valve ID (Purple)	458525
④	Riser Seal	472300	
⑤	Spring	2"	630900
		3"	631000
		4"	459500
		6"	460400
		12"	460500
⑥	Ratchet Ring	629300	
⑦	Riser	2"	630300
		3"	630400
		4"	424100
		6"	458700
		12"	458900
⑧	Check Valve Assembly	437400	
⑨	Body	2" w/o Side Inlet	630500
		3" w/o Side Inlet	630600
		4" w/o Side Inlet	424000
		6" w/ Side Inlet	458800
		12" w/ Side Inlet	459000
⑩	Side Plug (Not available on 4" model)	460600	



# INST-04, 06 & 12: Spray Sprinklers

Item	Description		Catalog No.
①	Flush Cap ( <i>Blue</i> )		423905
②	Snap-On Rubber Cover	Black	469805
		Purple	469800
③	Body Cap	Standard (Black)	458510
		With Check Valve ID (Black)	458515
		Reclaimed Body Cap (Purple)	458530
		Reclaimed w/ Check Valve ID (Purple)	458535
④	Riser Seal		472300
⑤	Spring	4"	459600
		6"	460400
		12"	460500
⑥	Ratchet Ring		629300
⑦	Riser	4"	437505
		6"	459105
		12"	462205
⑧	Check Valve Assembly		437400
⑨	Body	4" w/o Side Inlet	424000
		6" w/ Side Inlet	458800
		12" w/ Side Inlet	459000
⑩	Side Plug ( <i>Not available on 4" model</i> )		460600

